

SLIDING FIRE DOORS (SINGLE WING)

GSF BP EI30, EI60

Sliding fire doors **GSF BP EI30** and **EI60 GLOBAL SYSTEM** are an ideal solution to separate fire zones in a building. Doors prevent spreading **fire and thermal radiation** by the specified time. Sliding fire doors can be installed wherever there is some free space available to one side of the door opening. Due to regulations, fire doors are required in most public buildings, such as: shopping malls, museums, hospitals, multifamily houses, production halls, warehouses etc.



► TYPES OF SLIDING FIRE DOORS

GSF BP EI30 - prevents the spread of fire and the flow of gases and heat streams for **30 minutes**

GSF BP EI60 - prevents the spread of fire and the flow of gases and heat streams for **60 minutes**

► SLIDING FIRE DOOR CONSTRUCTION

The sliding door consists of: a track, a door leaf, an entry pocket with ballast and an electro-holder with a closing speed regulator.



Limits the flow of flames, gases and heat ✓

Separation of fire zones ✓

Ensures the safe evacuation ✓

Compact, light construction ✓

Standard colours: **RAL 9010, RAL 7035, RAL 7016** ✓

Easy to assemble ✓

► ADDITIONAL INFORMATIONS

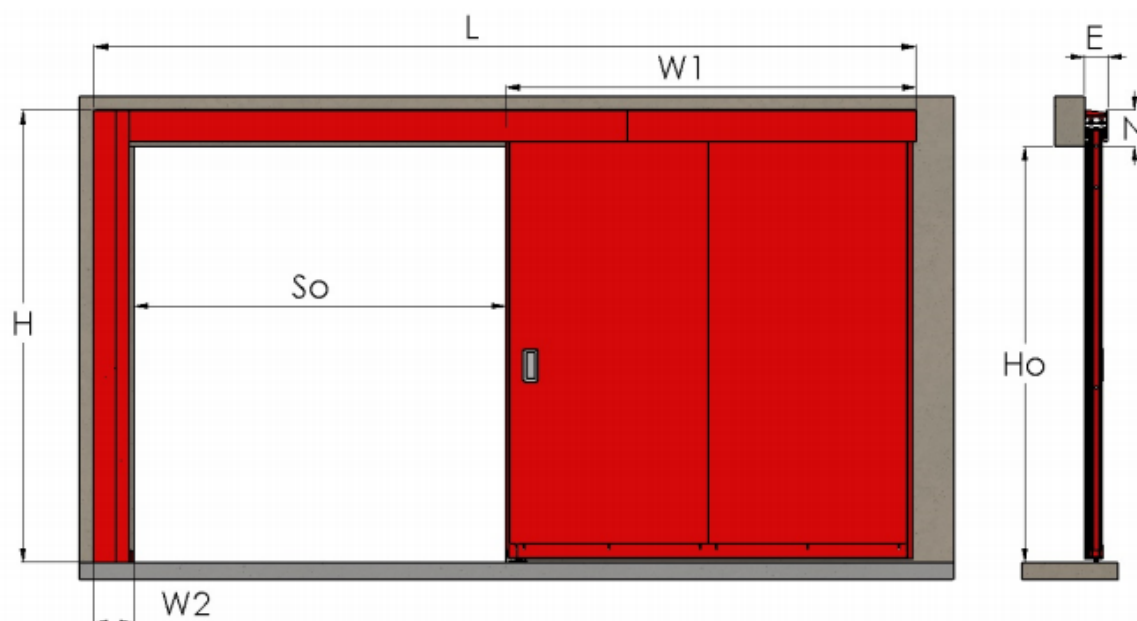
Sliding fire doors are made of a **steel** door leaf filled with **fireproof material**. The door leaf panels are suspended in a **guide rail** and can be painted in any color from the RAL palette. Any graphics can be made on the door leaf. The leaf of the fire door is held in position open by means of an **electro-holder**, and they are closed by gravity. The door starts to close after receiving a signal from the fire alarm system, or a smoke detector. The door is available in the right or left version, and the counterweight can be on the front or on the back.

Sliding fire doors **GLOBAL SYSTEM GSF BP EI** are made in accordance with the harmonized standard: **EN 16034:2014, EN 13241:2003+A2:2016**

CONSTRUCTION CONDITIONS

GSF BP EI30 EI60

The installation conditions specify the space required for the gate installation. All unrecognized dimensions in terms of construction conditions should be agreed individually.



Dimensions							
So	Ho	N	E	W1	L	W2	H
Opening width [mm]	Opening height [mm]	Minimum lintel height [mm]	Building depth [mm]	Space on the opening side [mm]	Total length of door [mm]	Entry pocket + ballast [mm]	Total height (without housing) [mm]
min. 400 max. 6910	min. 400 max. 6000						
≥400 ≤3455	≥400 ≤3450	220	137	So + 300(counterweight on the front) So + 436 (counterweight on the back)	2 x So + 547	246 (counterweight on the front) 110 (counterweight on the back)	Ho + 220
≥3455 ≤5182	≥400 ≤3450	220	137	So + 320 (counterweight on the front) So + 456 (counterweight on the back)	2 x So + 566	246 (counterweight on the front) 110 (counterweight on the back)	Ho + 220
≥400 ≤3455	>3450 ≤5175	246	137	So + 300 (counterweight on the front) So + 436 (counterweight on the back)	2 x So + 546	246 (counterweight on the front) 110 (counterweight on the back)	Ho + 246
≥400 ≤5182	>5175 ≤6000	246	137	So + 337 (counterweight on the front) So + 473 (counterweight on the back)	2 x So + 603	266 (counterweight on the front) 130 (counterweight on the back)	Ho + 246
>5182 ≤6910	≥400 ≤6000	246	137	So + 337 (counterweight on the front) So + 473 (counterweight on the back)	2 x So + 603	266 (counterweight on the front) 130 (counterweight on the back)	Ho + 246
>3455 ≤6910	≥3450 ≤6000	246	137	So + 337 (counterweight on the front) So + 473 (counterweight on the back)	2 x So + 603	266 (counterweight on the front) 130 (counterweight on the back)	Ho + 246
Additional informations							
Gate leaf weight (per 1m ²) [kg]					Approx. 46		
The minimum thickness of the wall with a density of 600 kg/m ³ [mm]					150		

Warning:

The surface for mounting the gate must be vertical and even (smooth), tolerance +/-1mm/m.

Otherwise, the customer is obliged to level the surface before installation.

The documentation made by GLOBAL SYSTEM is protected by copyright.

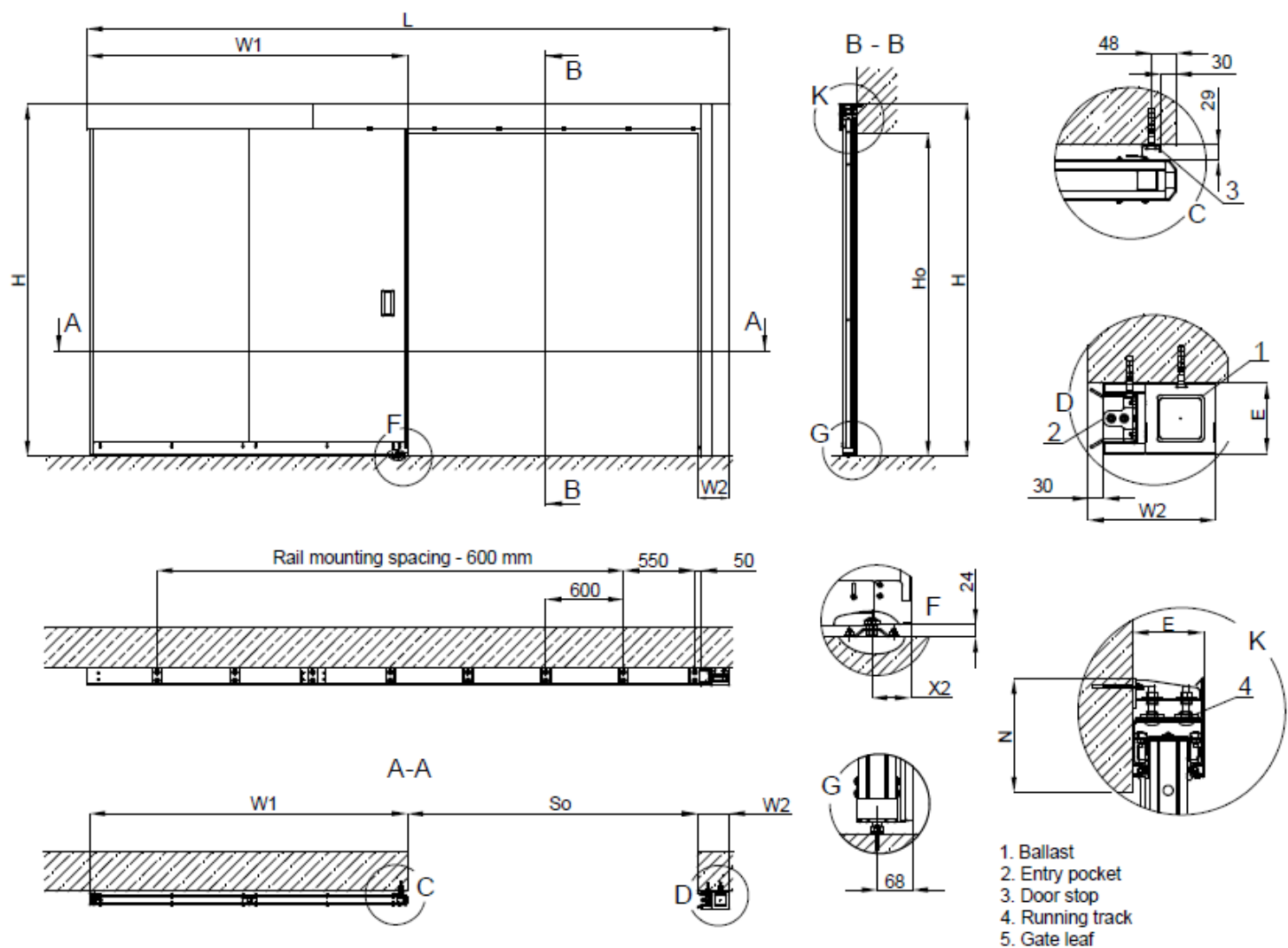
The manufacturer has the right to change the dimensions of the development during the execution of the order.

The manufacturer reserves the form of legalization of the product in case of order.

All additional information to be agreed with the GLOBAL SYSTEM Technical Department

SLIDING FIRE DOORS (SINGLE WING) GSF BP EI30, EI60

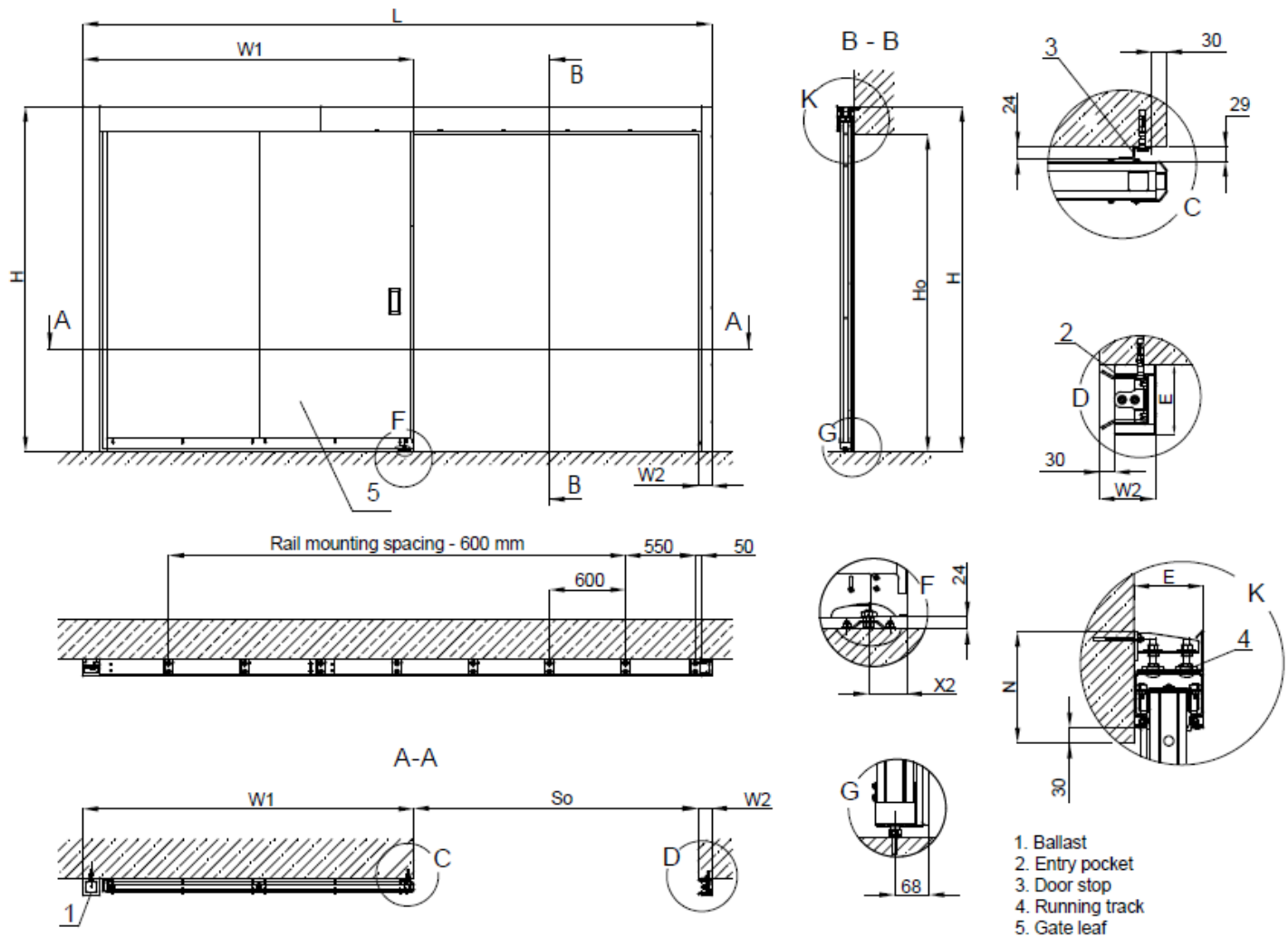
Left version, counterweight on the front



All additional information to be agreed with the GLOBAL SYSTEM Technical Department

SLIDING FIRE DOORS (SINGLE WING) GSF BP EI30, EI60

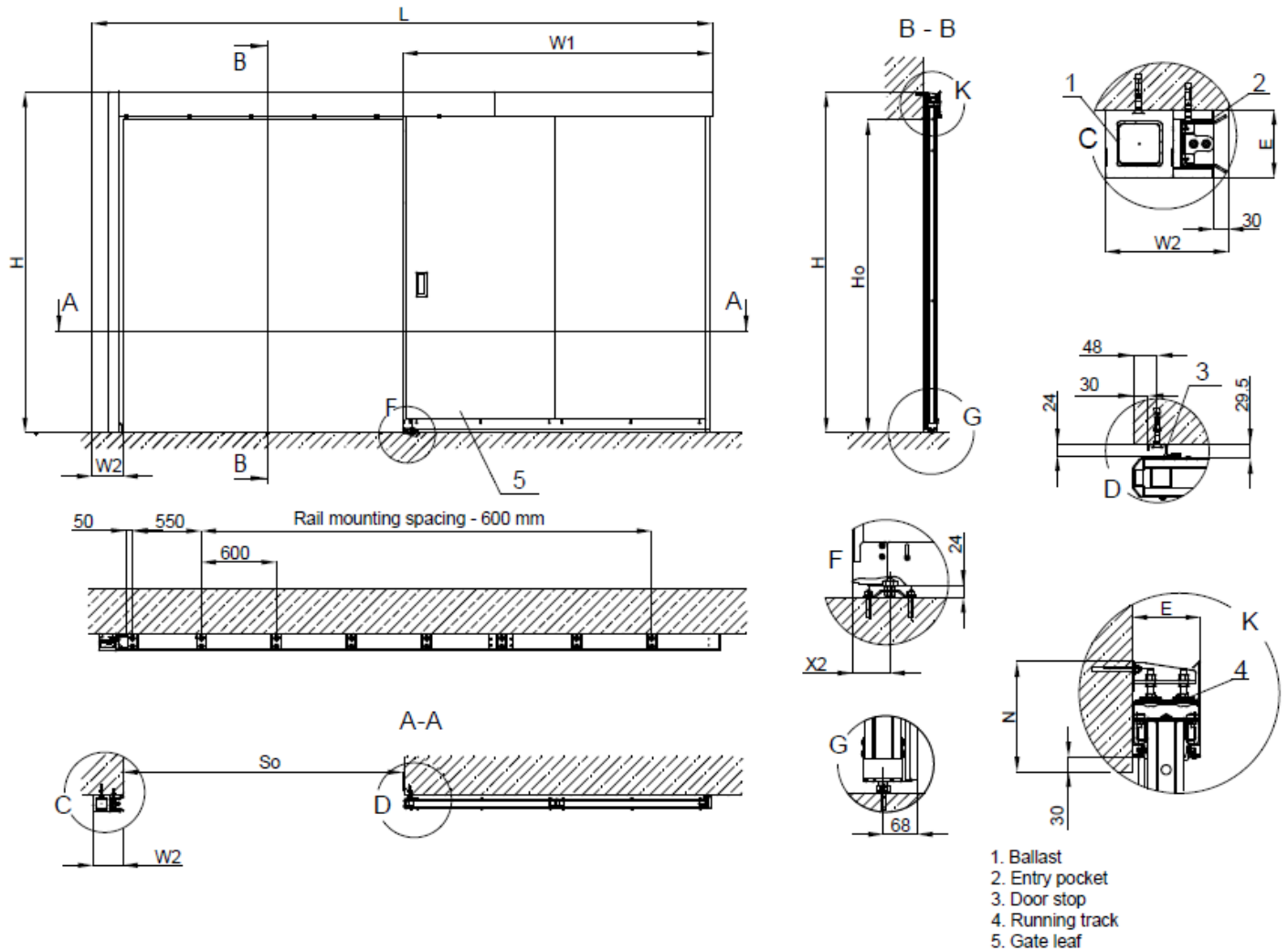
Left version, counterweight on the back



All additional information to be agreed with the GLOBAL SYSTEM Technical Department

SLIDING FIRE DOORS (SINGLE WING) GSF BP EI30, EI60

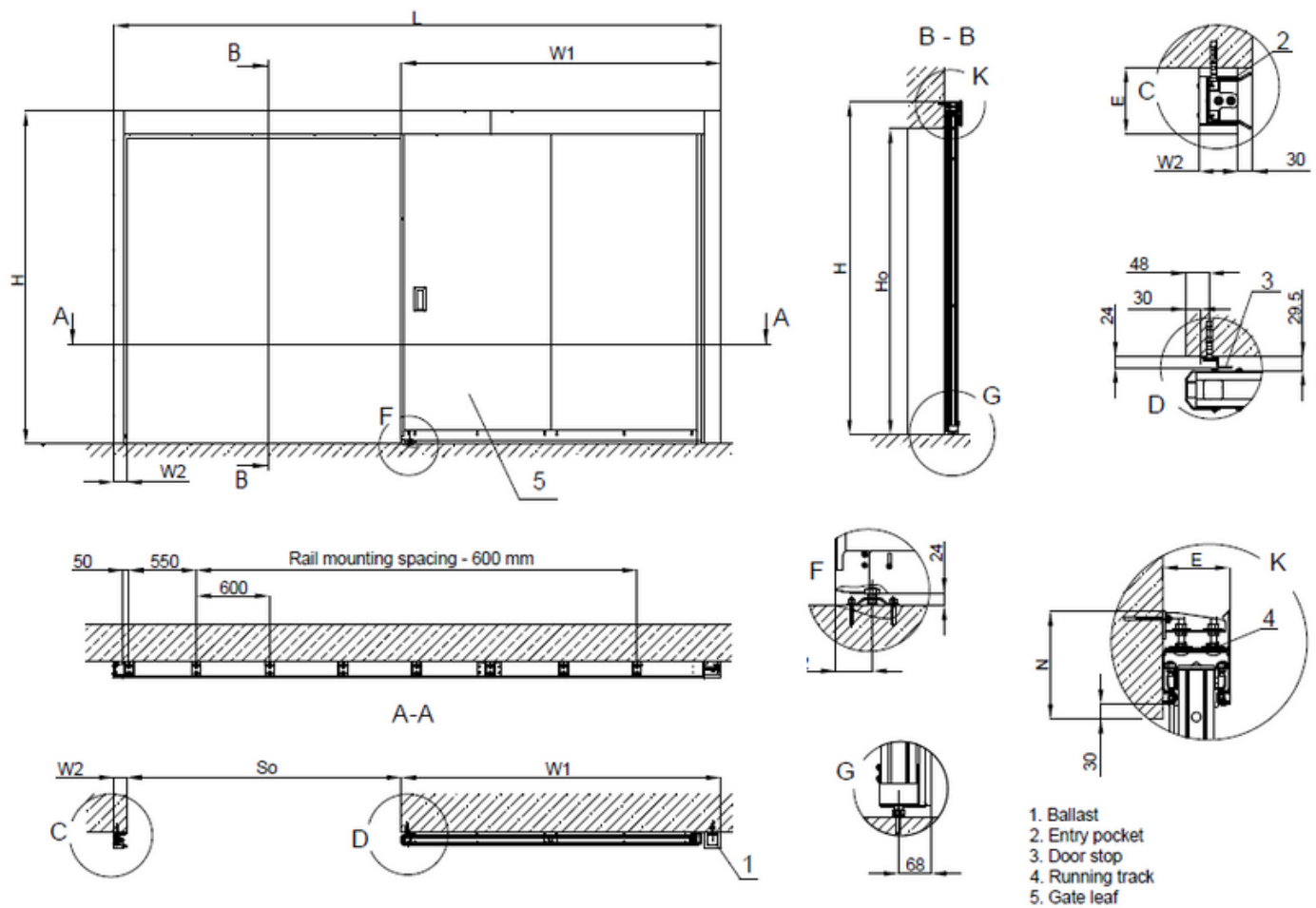
Right version, counterweight on the front



All additional information to be agreed with the GLOBAL SYSTEM Technical Department

SLIDING FIRE DOORS (SINGLE WING) GSF BP EI30, EI60

Right version, counterweight on the back



All additional information to be agreed with the GLOBAL SYSTEM Technical Department